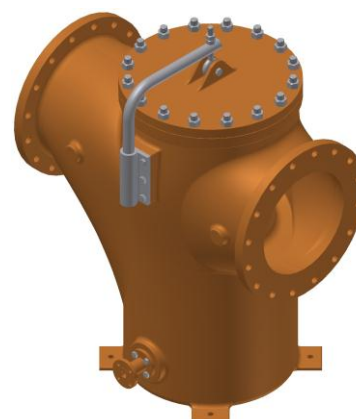
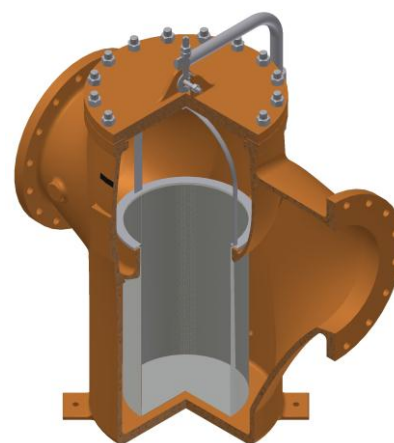
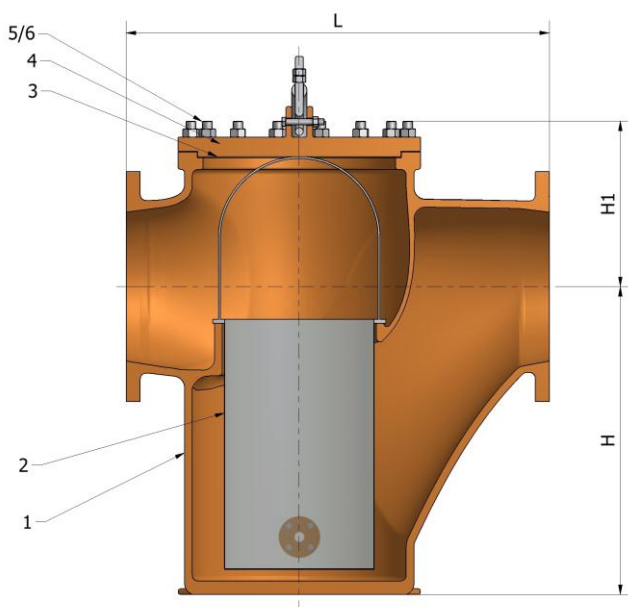


## CAST STEEL BASKET FILTERS "FBC"

Designed to asme b16.34 the strainer bodies are produced with a superior wall thickness for corrosion allowance.  
 Standard strainers are equipped with screens for the average service of most mediums ( steam, gas, air, oil, chemicals , ect. ).  
 The large screen open area ensures an efficient filtering action with a low pressure drop.  
 Filtering area to inlet area ratio is larger than 3 to 1 .  
 Screens are manufactured with perforated plate in the materials and with the perforation specified in the relevant tables .  
**Different filtrations or materials are available on request.**

POS.	DESCR.	Std MAT.	Std Mat.	Std mat.	SPARE
1	Body	ASTM A216wcb	ASTM A351 cf8(m)	ASTM A352lcb	
2	screen	Ss 304	Ss 304-316	Ss304	X
3	gasket	Sw 316/graphite	Sw 316/graphite	Sw316/graph	x
4	cover	Astm a105n	Astm a182 f304/316	ASTM A350lcb	
5	bolts	Astm a193b7	Astm a193 b8	L7	
6	nuts	Astm a1942h	Astm a194 Gr8	Gr4	
7	drain	Astm a105n	Astm a182 f316	Astm a105n	



CONNECTIONS	
Flanged	Asme b16.5

Size (inches)	ANSI 150#				ANSI 300#			
	L	H	H1	Kg	L	H	H1	Kg
2"	290	207	110	36	309	205	110	38
3"	350	265	140	47	350	265	140	49
4"	420	350	160	60	420	350	160	65
6"	550	500	180	170	550	500	180	178
8"	700	650	240	290	725	650	240	299
10"	850	850	315	400	850	850	315	415
12"	950	950	350	535				
14"	1150	1245	395	920				
16"	1100	800	430	950				

- All strainers should be installed as close as possible to the machinery which they are being installed to protect. It is important to ensure that the strainer installed with the flow following the same direction as the flow direction arrow cast onto the strainer body.
- For mounting in horizontal or inclined pipelines, ensure that the screen housing is always mounted below the pipeline.
- strainers should never be installed in vertical pipelines in the upward flow condition.